



CL – SPRAYKOTE

RUBBERISED ASPHALT SPRAY APPLIED WATERPROOFING MEMBRANE

DESCRIPTION

CL – SPRAYKOTE is a 2-part elastic waterproofing membrane. It consists of rubberized asphalt emulsion (Part A) and an inorganic catalyst (Part B). Upon spraying, these two liquids collide before reaching the substrate and react instantly. As a result, the rubberized asphalt will form a uniform seamless waterproofing membrane, which adheres firmly to the surface while separating from the water.

USES

Can be applied on mineral substrates. Areas of application include floors, walls, underground structures, water tanks, water pit, roofs, basements, tunnel etc.

FEATURES

- Rapid setting
- Excellent elongation
- Superior waterproofing properties
- Applicable to damp surfaces.
- Good adhesion strength
- Non-flammable

TECHNICAL INFORMATION

Elongation at break : > 1000% (ASTM D412:98)

Tensile strength : > 0.2 N/mm² (ASTM D412:98)

Adhesion strength : > 1 N/mm²

Gas permeability : 3.1ml/mm.m².day

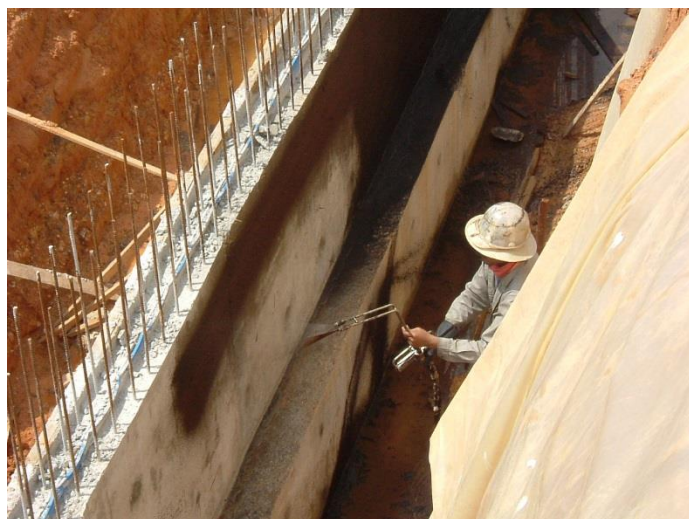
Chemical resistance : resistant to mild acid / alkaline;
not resistant to solvent / oil.

Water penetration : no water penetration @ 5kg/cm² for 24hr

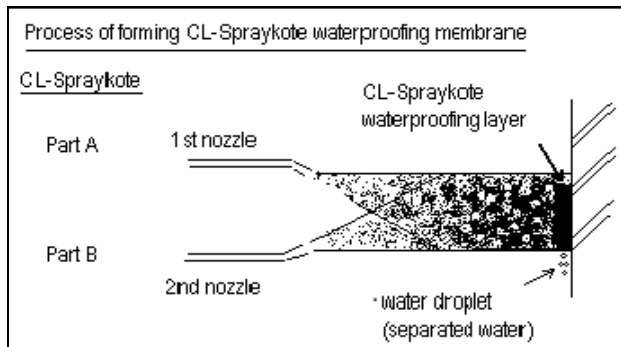
Crack bridging : > 10mm

SURFACE PREPARATION

Surface to be waterproofed must be sound, free of dirt, dust, grease, oil, wax and other contaminants. For crack, voids, chipped edges, uneven surfaces and holes, first repair with CL-Rapid Repair. Fresh concrete must be cured for at least 14 days prior to application. CL-Spraykote can be applied on damp surface but not on water ponding area.



122014



PRIMING

No priming is required.

APPLICATION

Use a two-nozzle spraying machine. Make sure the distance between the substrate surface and nozzle of the spray gun is maintained at about 50cm. Adjust the spraying angle such as CL-Spraykote Part A and Part B will collide before reaching the substrate surface. Adjust the flow rate and pressure of the machine in the Part A : B ratio of 10 : 1. Spray from the lower portion to the upper portion so as to avoid excessive dewatering water flowing to the unsprayed portion. If dewatering water flow is not apparent during spraying, it indicates incorrect mixing ratio of Part A and B. Adjust the spray gun nozzle or the flow rate. Spray at the minimum thickness of 2mm. Spraying can be done continuously on wet-to-wet basis.

PROTECTION

Precaution steps need to be taken so that CL-Spraykote waterproof membrane will not be damaged by traffic, backfill and weathering soon after application. After CL-Spraykote is dried, protect the membrane by cement screed, polyethylene sheet, fiber mesh, insulation board etc. In the case of horizontal surface, do not step on it during the dewatering period.

CLEANING

No special cleaning needed. Flush off the remainder in the nozzle and hoses into the container separately for Part A and B. Close the container tightly to prevent skinning. Harden material remain at the nozzle outlet could be easily clean off with kerosene.

COVERAGE

Approximately 3kg (Part A) per sq meter for 2mm thickness.

SHELF LIFE

6 months stored in cool and dry place, sealed in unopened container.

PACKING

Part A : 200 kg drum

Part B : 20 litre pail

Disclaimer: Specification are subject to change without notification.

CLP since 1947
HQ/SINGAPORE : CLP INTERNATIONAL PTE LTD
CHIN LEONG CONSTRUCTION SYSTEMS PTE LTD
TEL : +65-6265 2786
FAX : +65-6265 1240
Email : chinleong@clp.com.sg

MALAYSIA: CLP CONSTRUCTION SYSTEMS SDN BHD
SELANGOR TEL : +60-3-3176 5099
MALACCA TEL : +60-6-263 1677
FAX : +60-3-3176 2797
FAX : +60-6-263 1215
Email : clp@clp.com.my

JOHOR
TEL : +60-7-252 5385
FAX : +60-7-252 5391

KEDAH
TEL : +60-4-489 3066
FAX : +60-4-489 1877

PERAK
TEL : +60-5-292 6966 / 6976
FAX : +60-5-292 6936

INDONESIA :
PT RANGALO CLP
TEL : +62-21-581 3951
FAX : +62-21-581 3950
Email : rangalo@clp.net.id

PT-CLP INDONESIA
TEL : +62-21-2931 5121
FAX : +62-21-2931 5133 / 28
Email : info@clpindo.com

THAILAND:
CLPI (THAILAND) CO LTD
TEL : +66-2769 5633
FAX : +66-2769 5612
Email : clpi@ksc.th.com

VIETNAM :
CLPI VIETNAM CO LTD
TEL : +84-8-3526 1033
FAX : +84-8-3526 1032
Email : sales@clp.com.vn

TAIWAN :
SIHTACO CO LTD
TEL : +886-2-2791 8539
FAX : +886-2-8192 6248
Email : Alice.Lee@sihtaco.com.tw
Michael.Ku@sihtaco.com.tw

HONG KONG :
CHIN LEONG INTERNATIONAL CO LTD
LAMERTON ASIA HOLDING LTD
TEL : +852-2542 2206
FAX : +852-2544 9563
Email : chinleong@chinleong.com.hk

CHINA:
LAMERTON CHEMICAL (SHANGHAI) CO LTD
SHANGHAI
TEL : +86-21-5830 7559
FAX : +86-21-6840 7408

ZHONG SHAN SOUTH ASIA CHEMICAL LTD
ZHONG SHAN
TEL : +86-760-8554 4111
FAX : +86-760-8554 4113